



PERMANENT HAIR REMOVAL

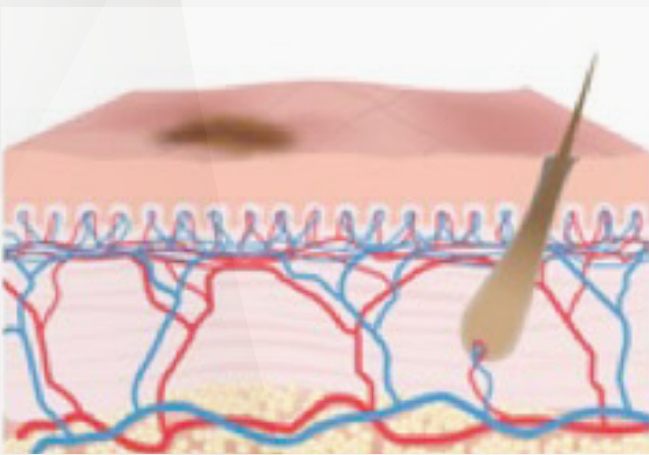
Theory

Introducing Divine BSL, the unrivaled Broad-Spectrum light, hailed as the most potent IPL (Intense Pulsed Light) device on the global market. BSL is engineered to combat skin issues and redefine standards.

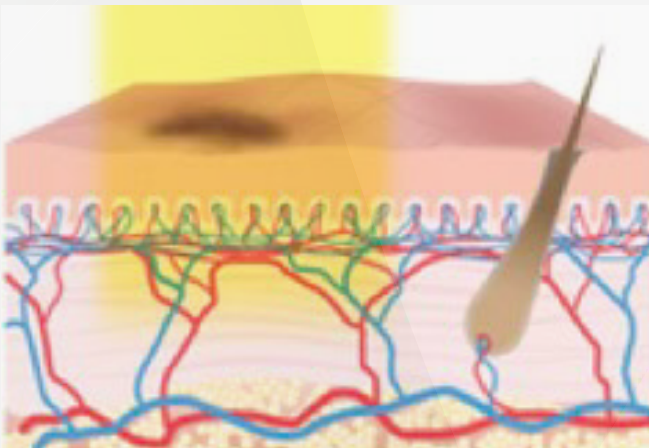
Elevating the anti-aging game by reaching deeper levels for a youthful visage, and cutting edge IN Motion Technology.

What is BSL?

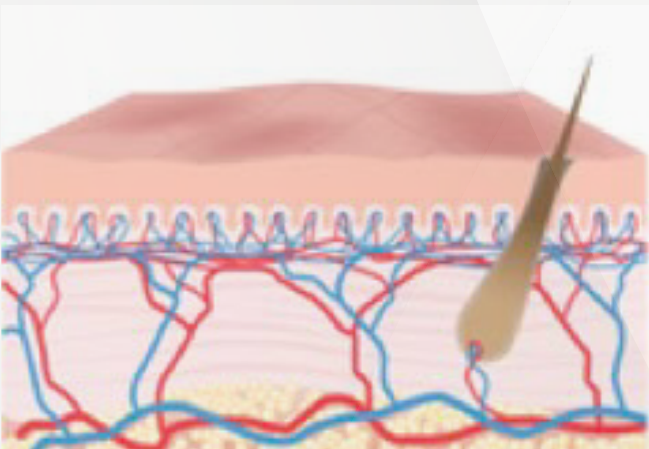
BSL (Broad-Spectrum Light) is a high intensity light frequency that imparts controlled heat into the skin. Targeted cells and tissues absorb this precisely measured heat. The purpose is strategically damaging these cells, stimulating the skin's immune system to initiate self-repair. As a result, the skin naturally eliminates these damaged cells, shedding them along with other dead skin cells on the surface. Vascular lesions treated with BSL gradually fade over 10-14 days, with no peeling involved in the process.



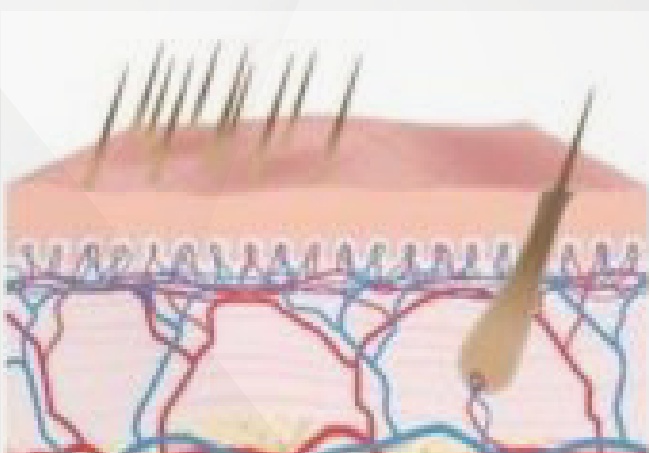
Unwanted Benign Lesion (brown spot)



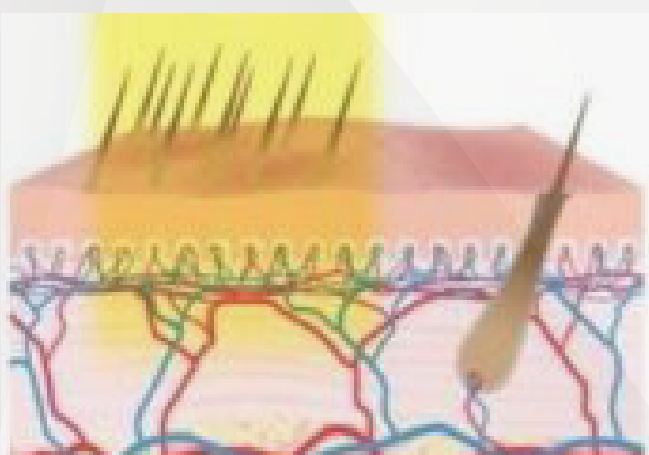
During BSL Treatment
BroadBand Light penetrates the skin to reach the pigmented lesion and fragment the melanin cells



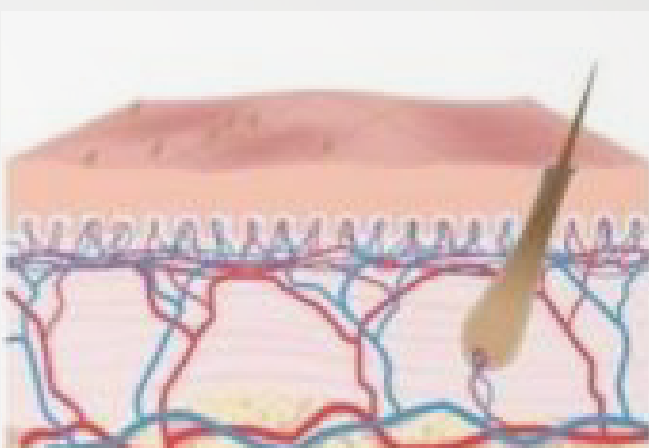
After BSL Treatment
The particles left behind will peel or slough off in 7-14 days melanin cells



Unwanted hair at varying depths



During BSL Treatment
Broad-Spectrum Light penetrates the skin to reach the target anagen hairs and the heat damages the entire hair follicle



After BSL Treatment
A percentage of hair is destroyed with each treatment spaced apart 4-8 weeks

Applications



▶ Pigmented Lesions

▶ Vascular Lesions

▶ Acne

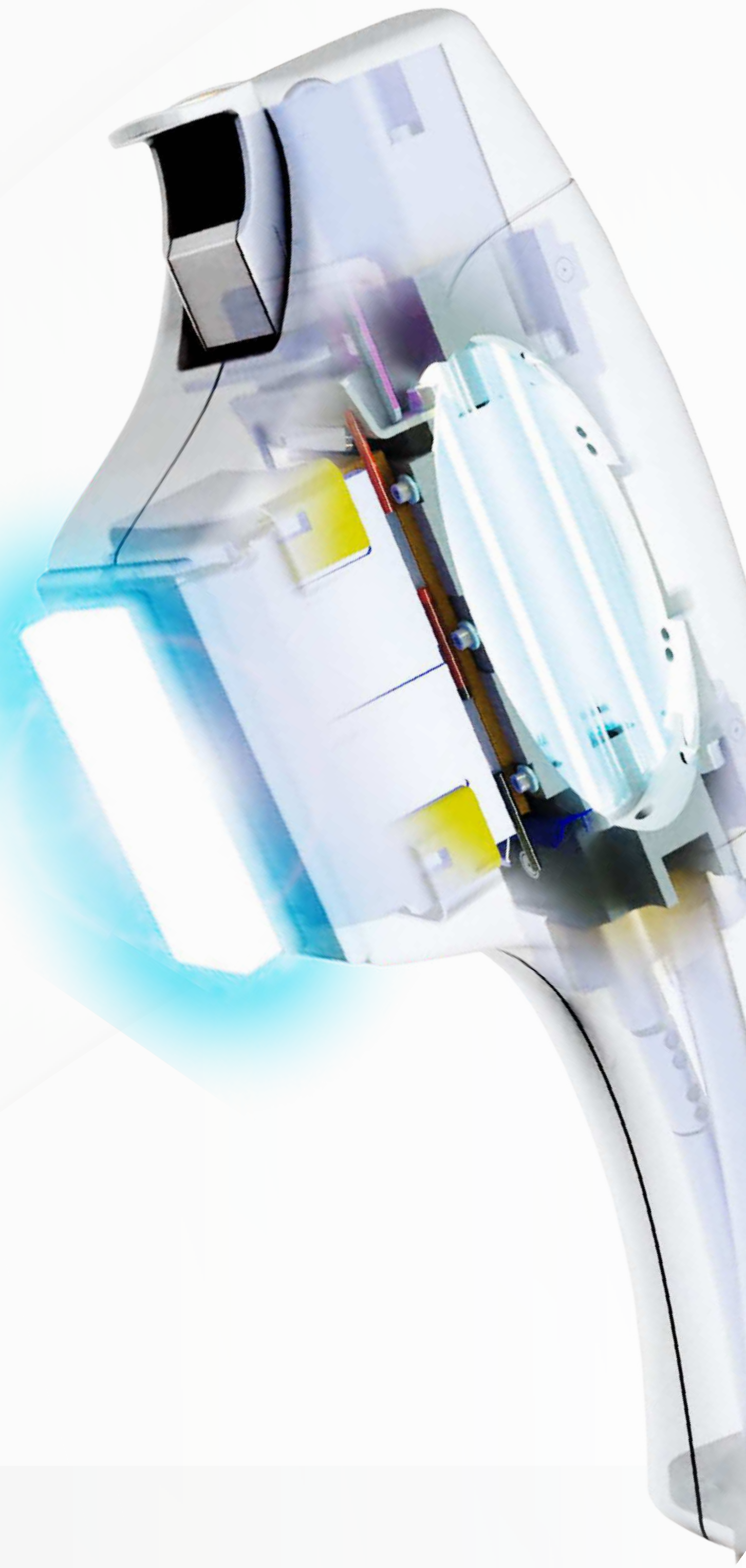
▶ Blood vessels

▶ Skin Firmness

▶ Uneven Skin Texture

▶ Unwanted Hair

Handle



- ▶ Uniform beam
- ▶ Big spot size
- ▶ High repetition, quick treatment
- ▶ Perfect filters, precision treatment
- ▶ Precision cooling
- ▶ Motion technology
- ▶ Flashlamps made in the USA

Hair Removal

640-950nm

Skin Rejuvenation

530-950nm

Vascular Therapy

530-750nm

Pigmentation Therapy

560-750nm

Acne Removal

420-520nm

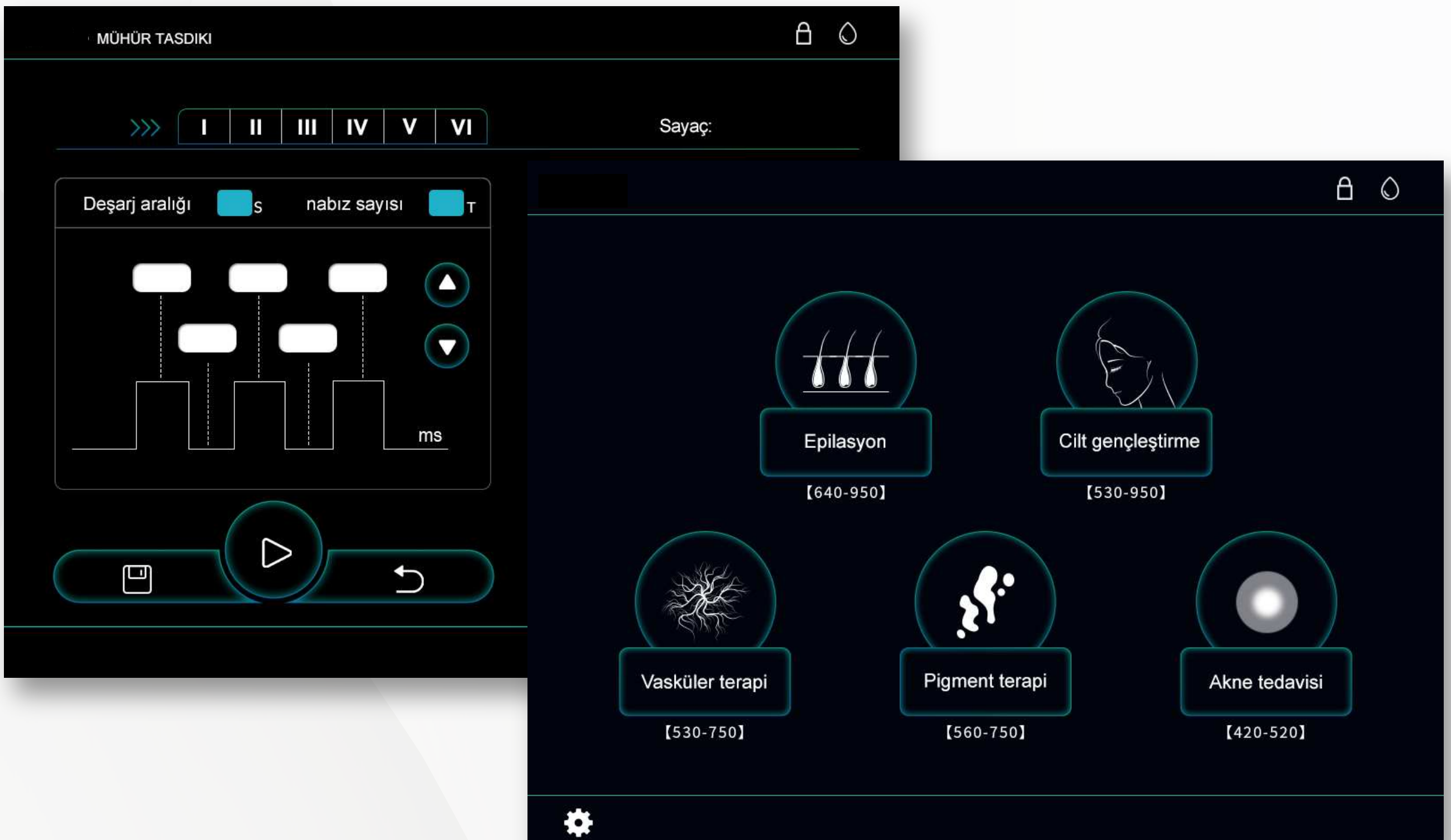


► Finesse adapters



Advantages

- -4x Faster treatments.
- -Large spot size and quick in-motion treatment.
- -4000w Power Supply.
- -Smart filters for precision treatment.
- -No downtime.
- -A broad spectrum of light to treat different conditions treats a larger area of skin than a laser.
- -Comfortable treatment, well tolerated without anesthetic cream.
- -Skin types I-VI.
- -High patient satisfaction and in-demand treatments will keep patients coming back for more.



Specification

Controller 15" TFT true color LCD display (24bits for color)

Output power 4000W

Frequency 1-10Hz

BSL energy IN MOTION: 1-15J/cm² STAMP: 1-50J/cm²

Number of pulse IN MOTION: 1T (single pulse) STAMP: 1-4T (multi pulses)

Wavelength 640-950nm; 530-950nm; 530-750nm; 560-750nm; 420-520nm

Number of handpiece 1pcs

Spot size 15 x 45 mm

Program languages English, Spanish, Turkish, Russian etc.

Sapphire cooling Semiconductor+ air + water + cooling gel

Skin cooling ≤0-10°C

Dimension of machine 19 x 19 x 43 inches

Dimension of package 27 x 25 x 99 inches

N.W. 126 lbs

G.W. 183 lbs

Voltage 220V / 110V

Before and After



Exodus
Lasers

CONTACT US
855-652-2754


DIVINE BSL™