



# SHR In-Motion



# SHR

---

# Multifunction

SHR is proprietary hair removal, skin rejuvenation method used in clinics around the world with global brand recognition.



# Applications

---

1

Hair removal

2

Skin rejuvenation

3

Pigment therapy

4

Vascular therapy

5

Acne treatment





# Handle



01 Real sapphire

02 1 million shots

03 Spot size 10\*50mm

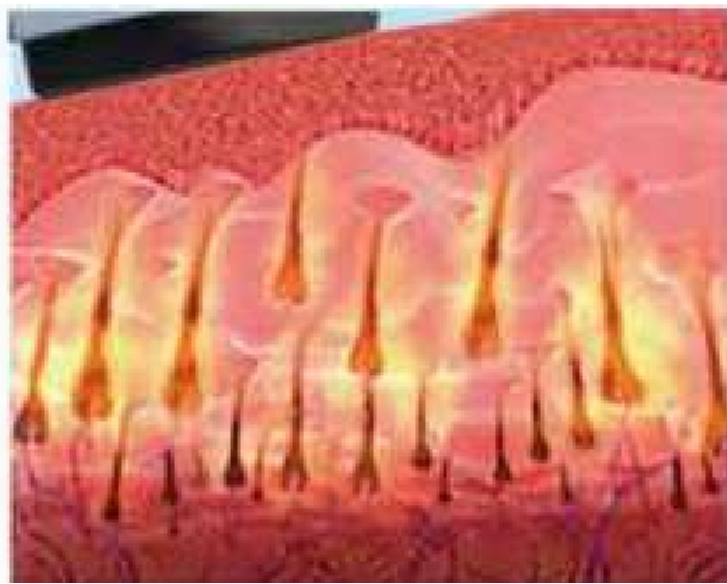
04 Filtrate dual wavelengths

# Theory

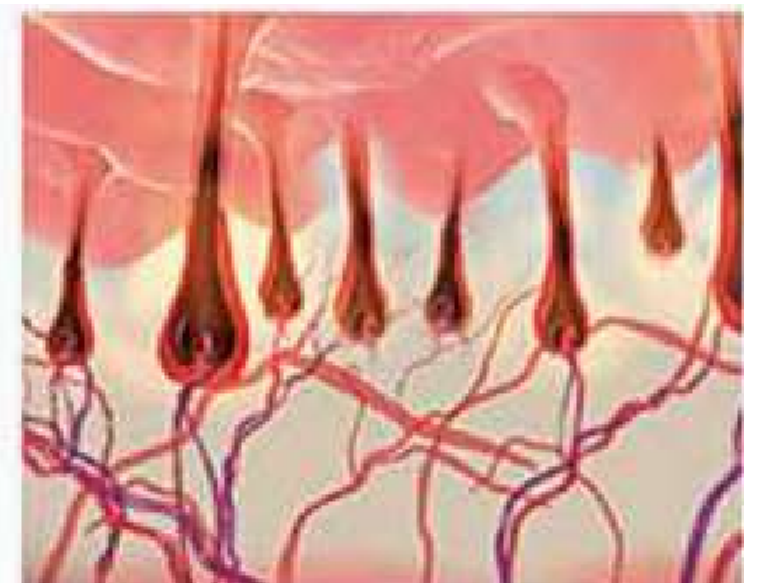
---



A high repetition rate of single pulses are delivered dermis.



Hair follicle absorb energy and increase dermis to target temperature.



Achieving high evenly energy repetition and utically effective heat build-up.

## What is SHR ?

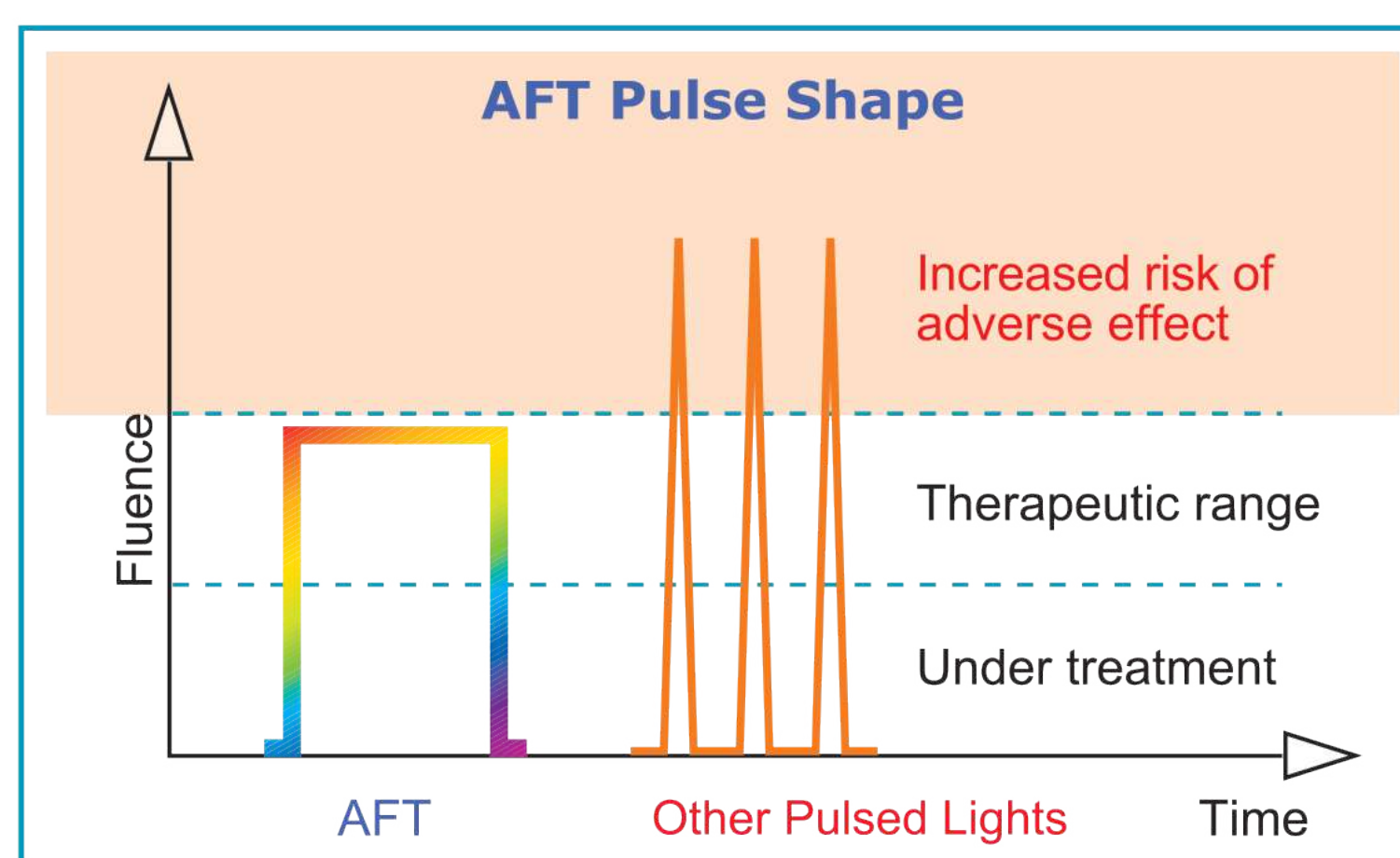
---

SHR is a new technology of permanent hair removal and skin rejuvenation which is having a sweeping success.

# Advantages

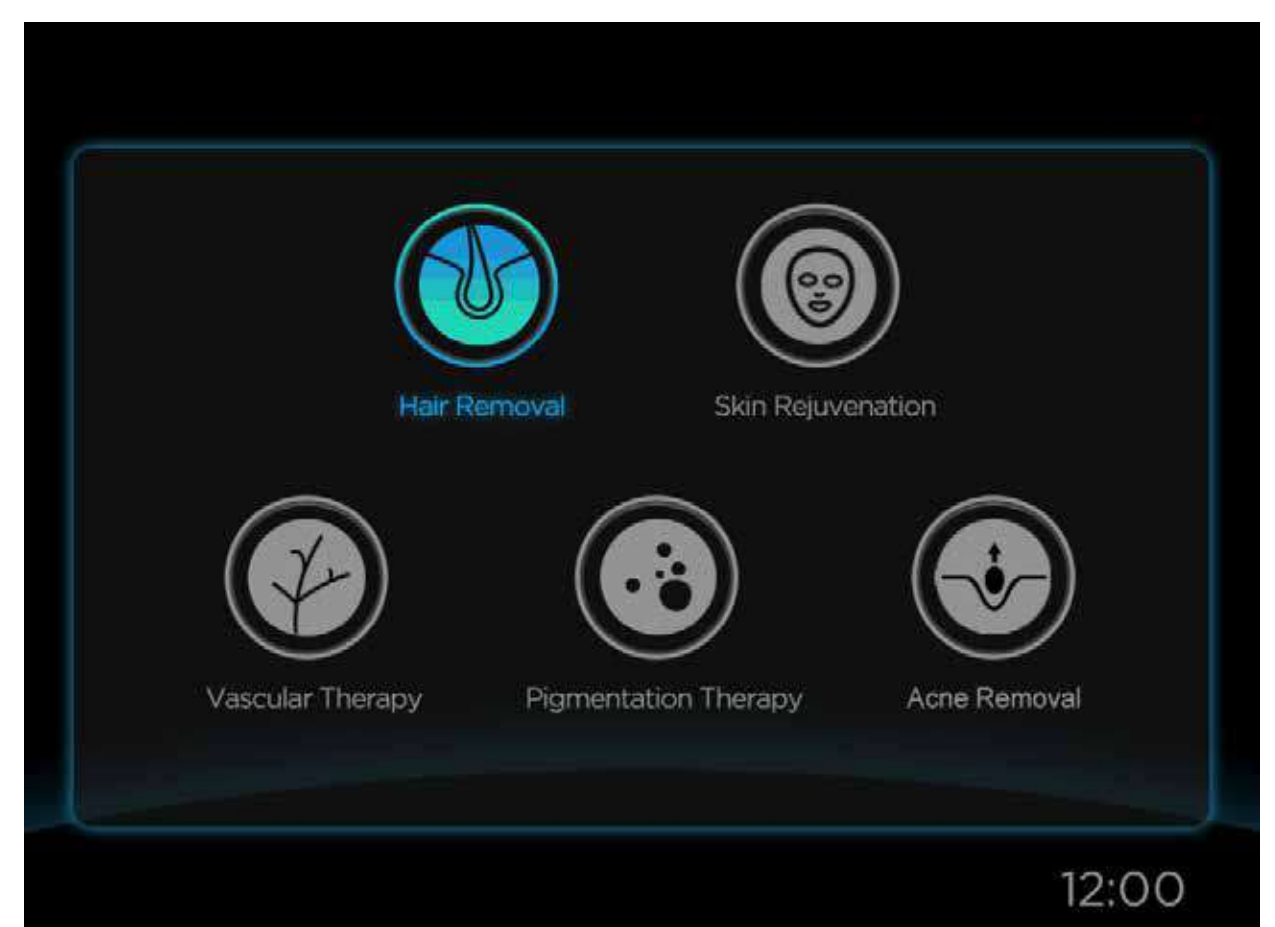
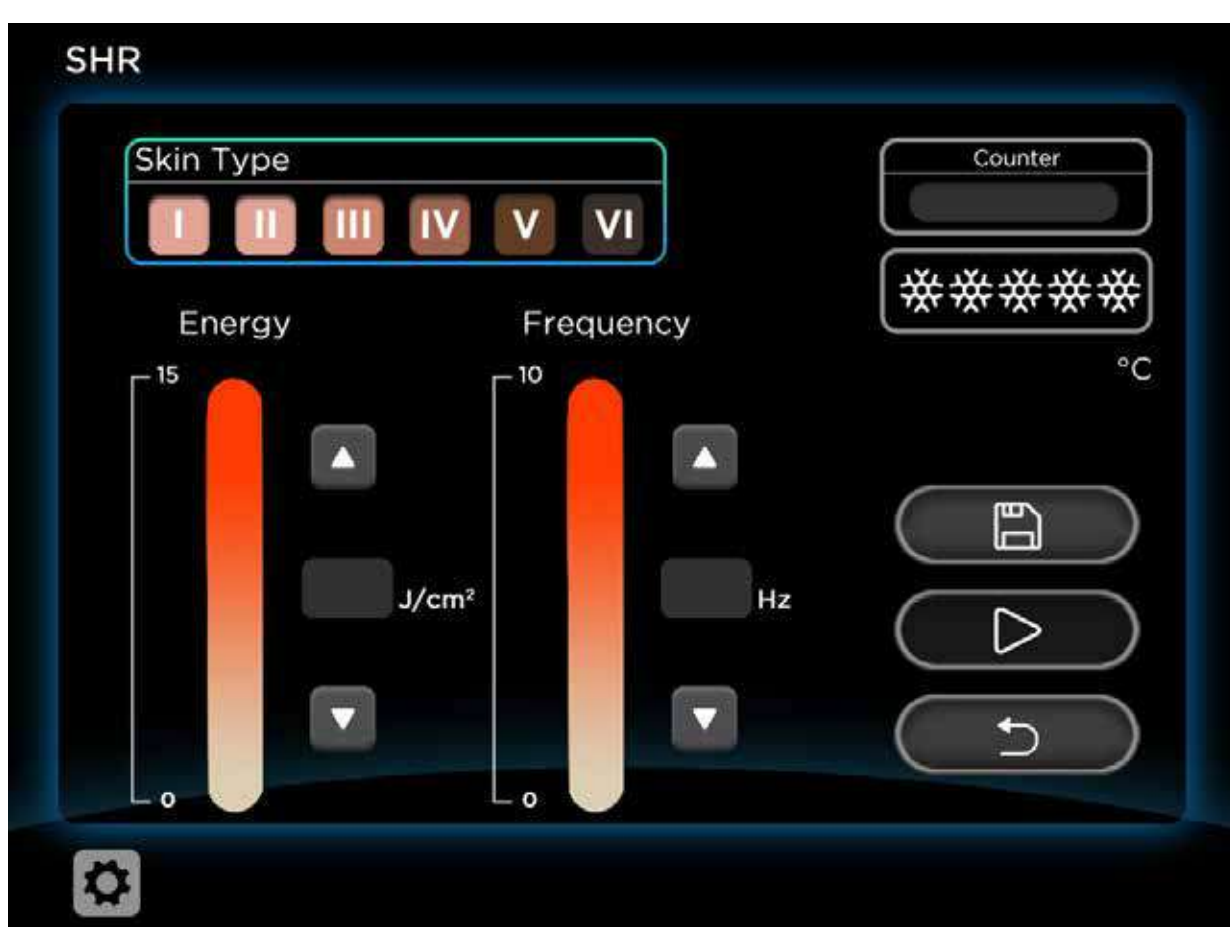
## 01 Technology

- OPT / AFT: Keep every pulse same, replace traditional sharp triangle output mode make the penetration depth more uniform, and patients more comfortable
- Filtrate the double wavelengths: 530nm- 950nm; 640nm- 950nm  
Make the wavelength much purer, more effective and painless



## 02 Interface

- In motion working mode ,1-10HZ to save time
- Two working mode: E-light & SHR  
meet wider demand , more professional
- The software is easy to operate





# Before and After

---



# Return on Investment

---

Treatment	Area	Price
Hair removal	Armpit	100 USD
Skin rejuvenation	Whole face	120 USD
Pigment therapy	Half face	150 USD
Vascular therapy	Half face	120 USD
Acne treatment	Whole face	110 USD

# Testimonials

---



Dr. Maria Sepúlveda

*“Our customers are pleased with the results of the SHR machine.”*



Eduardo Montelongo, MD

*“It's so powerfull, professional and the cool system works fantastic.”*



Helen Smith, MD

*“SHR is not painful due to the excellent isolation of the thermal effects in the tissue surrounding the follicle. The use of low fluences and relatively short pulses with high repetition frequency, together with a skin surface air cooling, result in a well-tolerated treatment by patients.”*



# Specification

Controller	10" TFT true color LCD display (24bits for color)	
Output power	2000W	
Frequency	1-10Hz	
RF energy	1- -50J/cm <sup>2</sup>	
IPL energy	SHR: 1-15J/cm <sup>2</sup>	E-LIGHT: 1-50J/cm <sup>2</sup>
Number of pulse	SHR: 1T (single pulse)	E-LIGHT: 1-6T (multi pulses)
RF delay	SHR: 1-100ms	E-LIGHT: 1-500ms
Wavelength	640nm-950nm; 530nm- -950nm	
Number of handpiece	2pcs	
Spot size	10* 50mm	
Program languages	Spanish,Turkish,English,Russian etc	
Cooling system	semiconductor+ air + water + cooling gel	
Skin cooling	≤0-10	
Dimension of machine	40*46*60 cm	
Dimension of package	66*66*62cm	
N.W.	32kg	
G.W.	50kg	
Voltage	220V / 110V	
Package	aluminum alloy case	