

**ExXodus**  
Lasers



# BodySculpt

Newest Second Generation UMS up to 150HZ

Muscle Building

Lipo-Reduction

Body Shaping

Vaginal Relaxation

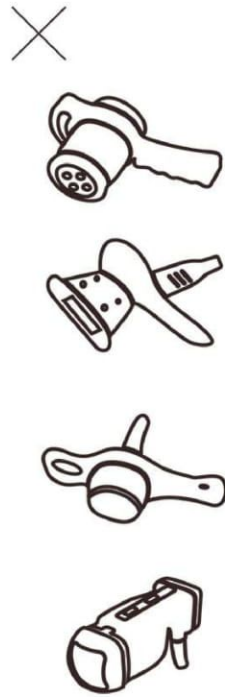
Pelvic Floor Muscle Relaxation

MUSCLE BUILDING  
AND FAT BURNING  
NO SWEAT REQUIRED!  
**BodySculpt**

Specification  
**BodySculpt**  
TECHNICAL DATA



Traditional  
Muscle  
Building



Other Body  
Shaping  
Devices



Surgical  
Liposuction

Technology: High Energy Pulsed Electromagnetic  
 Applicators: 4 Applicators  
 Magnetic Power: 10 Tesla  $\pm$  20%  
 Magnetic Frequency: Symmetric Biphasic Pulse, Max 150Hz  
 Treatment Protocol: Auto Mode and Manual Mode  
 Treatment Time: 30 Minutes  
 Pulse Width: 260 $\mu$ s  
 Interface: 10" Touch Screen  
 Power: 3500W  
 Dimension: 460 x 380 x 1130 (mm)

Accessory





Patented handles with two types: flat and curve designed 2 or 4 handles can work at the same time, meeting the simultaneous operation to different clients and different target areas



# BodySculpt

REDEFINING YOUR REAL SELF

## Muscle Building

Pulsed Electro Magnetic Wave

High technology exclusively dedicated to a slimmer body

- ✓ NON-INVASIVE · SAFE · EFFECTIVE
- ✓ OPERATOR INDEPENDENT
- ✓ IMORE COSMETICS · ENHANCE RESULTS



Exodus  
Lasers



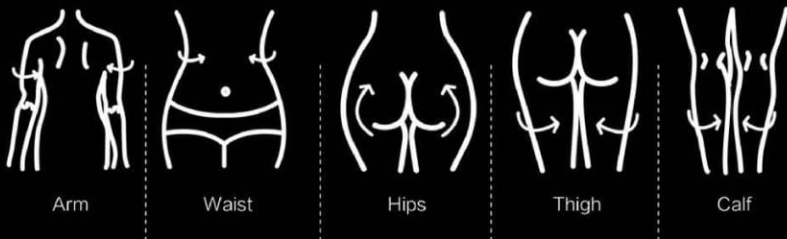
# BodySculpt

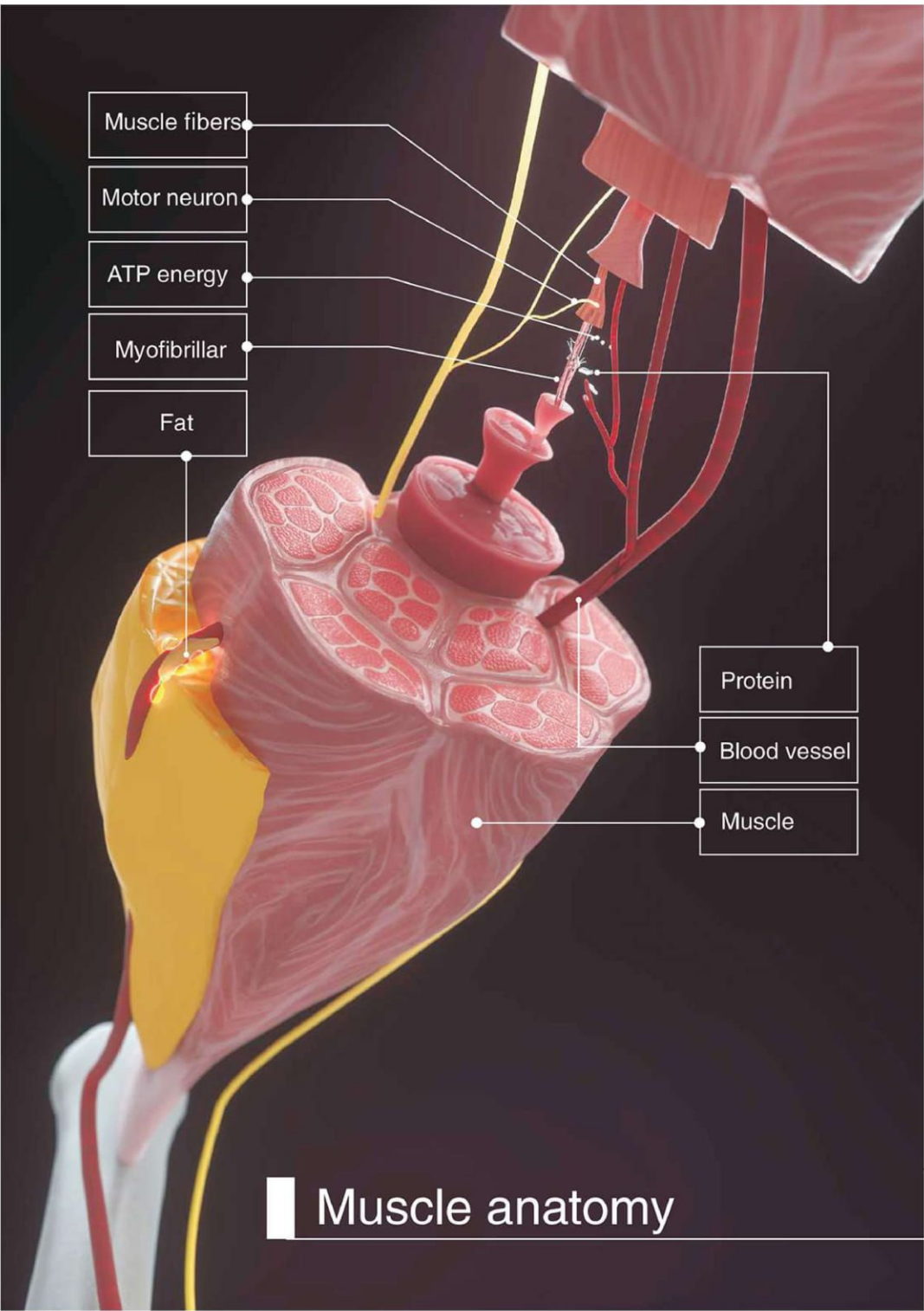
Equipped with 4 worldwide unique applicators, 2 different sizes worldwide

Unique small handle curved, ergonomic, perfect for arm, waist, hips, thigh and calf.



## UNIQUE SMALL HANDLE CURVED



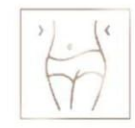


Muscle anatomy



## HOW IT WORKS ?

### IT IS NOT ONLY ABOUT FAT



Voluntary contractions may increase the demand for energy from fat cells. Released epinephrine signals the fat cells to initiate lipolysis.



Intensive supramaximal contractions enhance release of epinephrine which triggers a cascade effect leading to supramaximal lipolysis in fat cells.



The free fatty acids (FFAs) overflow causes cell dysfunction and induction of apoptosis programmed cell death. Dead cells collapse and are naturally flushed away.



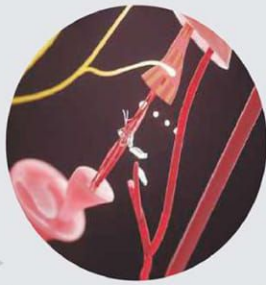
Intensive supramaximal contractions stimulate muscles' response with a deep remodeling of its inner structure, results in increased muscle density and volume.





### Myofibrillars loosen

As age grows, Myofibrillars are loose and fragile because of pregnancy, fat accumulation, lack of exercises and other factors. People become fatter and flabbier.



### Myofibrillars break

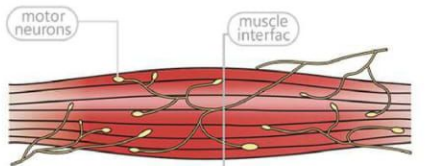
The equipment interact with muscle neurons to induce supra maximal muscle contractions. In the process of continuous muscle contractions, part of Myofibrillar are gradually broken to cause muscle self-repair.



### Myofibrillars repair

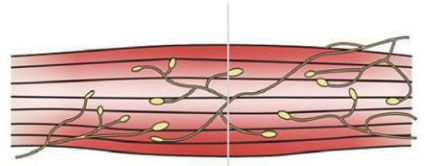
After treatment, Myofibrillars tend to be strong and tight. Muscle becomes firm and elastic. It responds with a deep remodeling of inner structure that result in muscle building and growth and body shaping.

# TO GET AN ATTRACTIVE BODY YOU NEED TO BUILD MUSCLE



### Before treatment:

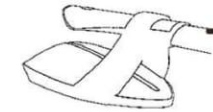
Muscle is thin and the circumference of muscle is short. Myofibrillar is loose with small density.



### After treatment:

Muscle is strong and the circumference of muscle is long. Myofibrillar is strengthened and increased with large density.

## BodySculpt



treatment, 30 minutes,

20000 crunches or squats

100% supramaximal muscle contractions,

other exercises only reach to 20-30%

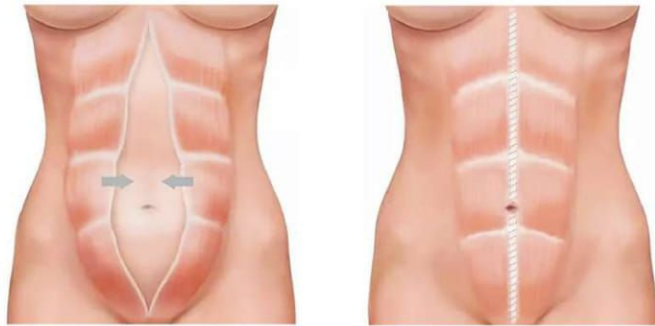
Abdominal muscle mass increased by 16%

Abdominal muscle firmness increased by 11%



# BodySculpt

## PRIVATE HEALTH OF WOMEN

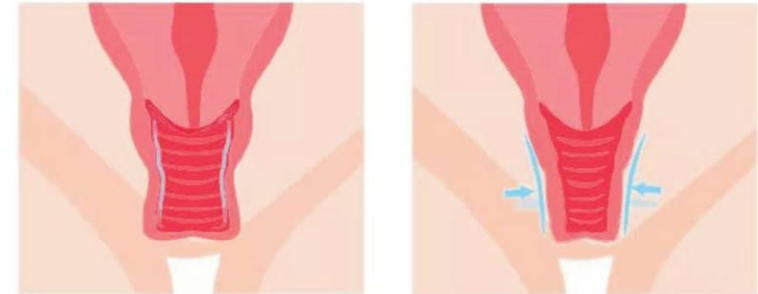


### Rectus Abdominis Firming Solution

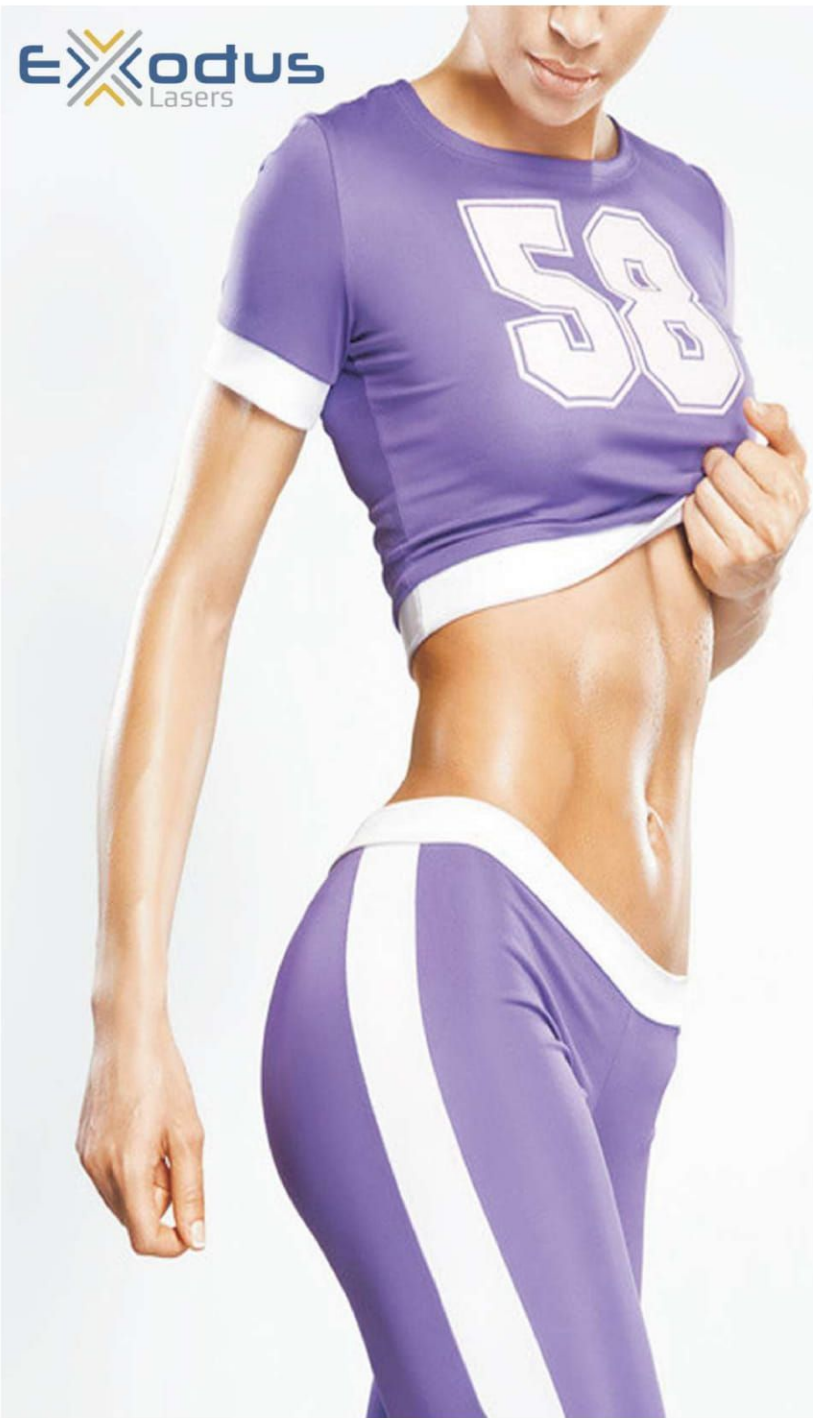
#### Firm the skin:

Em s c u p l t uses high-energy focused electromagnetic wave technology and high-magnetic pulses to generate directional motion force. One operation is equivalent to 10,000 Kegel exercises. It stimulates motor neurons to control pelvic floor muscle contraction, activates pelvic floor tissue, and promotes collagen regeneration.

Indications: vaginal relaxation, pelvic floor muscle relaxation, urinary incontinence, uterine prolapse, etc.



### Vagina Firming Solution



BEFORE



8 WEEKS AFTER 4<sup>th</sup> TREATMENT



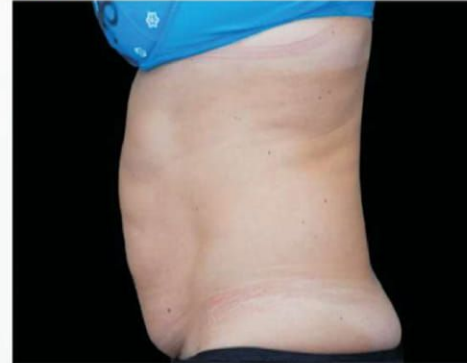
BEFORE



8 WEEKS AFTER 4<sup>th</sup> TREATMENT



BEFORE



8 WEEKS AFTER 4<sup>th</sup> TREATMENT



**BodySculpt**

BEFORE AND AFTER



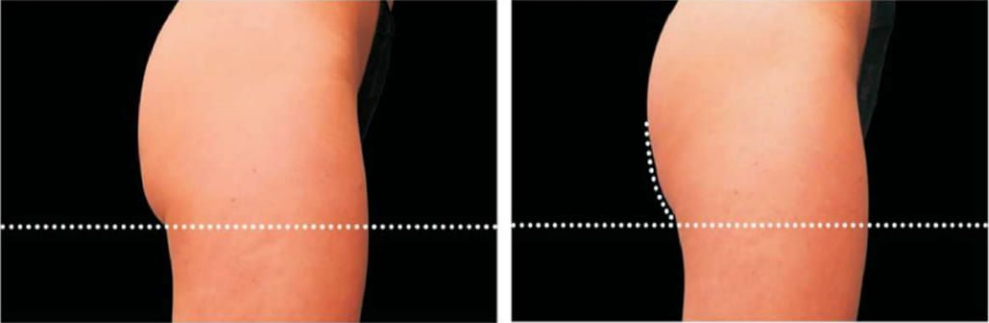


# BodySculpt



BEFORE

8 WEEKS AFTER 4<sup>th</sup> TREATMENT



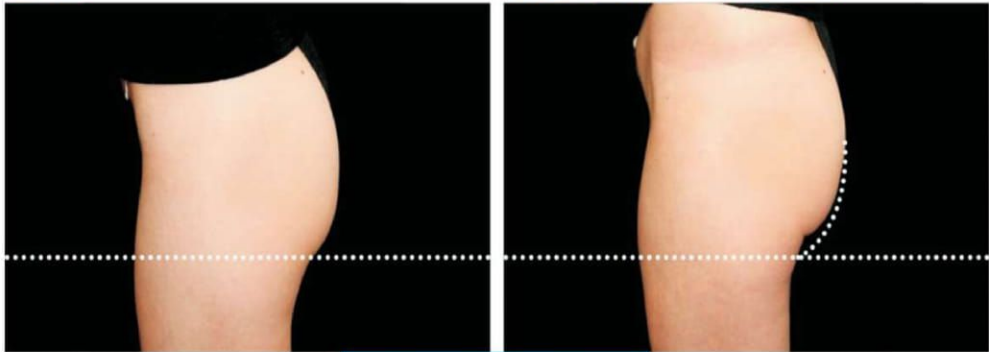
BEFORE

8 WEEKS AFTER 4<sup>th</sup> TREATMENT



BEFORE

8 WEEKS AFTER 4<sup>th</sup> TREATMENT



BEFORE AND AFTER

# BodySculpt

“ SELECTIVE PURCHASE

## SEATED WORKING HEAD

### Nicely Fit in Multiple Models

High-energy-focused electromagnetic technology fully activates pelvic floor muscle. It perfectly simulates the curve of the buttocks and accurately targets the gluteus. The 15° inclination design allows the legs to relax naturally. The raised support area in the center accurately fits the pelvic floor muscles. It's suitable for men and women of all ages and effectively solves various pelvic floor muscle injuries.



Quality of  
Life Improvement



Prevent Stress  
Urinary Incontinence



Post-partum  
Recovery



Rehabilitation  
of Pelvic Muscles



Pubococcygeous  
Enhancement



Women's Private  
Health Improvement